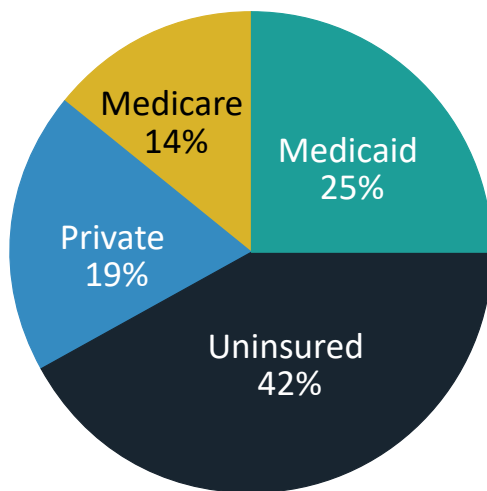


WHAT ARE COMMUNITY HEALTH CENTERS?

42 North Carolina Community Health Centers:

- 559,115 patients served in 2017 ¹
- 242 sites across the state
- Employed 4,161 people in 2017
- Fees adjusted based on patients' ability to pay
- Serve medically underserved populations
- Demonstrate sound clinical and financial management
- Are governed by a patient-majority board
- Serve all 100 North Carolina counties
- NC Community Health Centers have lower total spending per Medicaid patient compared to other providers

2017 NC CHC
Patients by Insurance Status



Every \$1 in federal investments to NC CHCs generates \$3.34 in economic activity across NC. In total, CHCs generate **\$940 million in economic activity** to NC.

CHCs Take Care of the Whole Person

- Primary medical care
- Dental care
- Behavioral/ mental health care and substance abuse counseling
- Pharmacy or medication assistance programs
- Health insurance outreach and enrollment
- Enabling services: case management, health education, interpretation, WIC programs, transportation

North Carolina CHC Visits
by Type of Service¹:



1. BPHC, HRSA, 2017 Uniform Data System (UDS)

NCCHCA STATE PRIORITIES

Priority 1: Close the Health Insurance Coverage Gap

236,000

CHC patients are uninsured

and the majority would benefit from closing the coverage gap.

Closing the Coverage gap would...

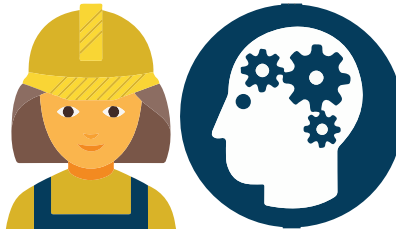
Bring **43,314 new jobs** and **\$21 billion** in state business activity



Cover the more than **12,000 uninsured veterans** in NC

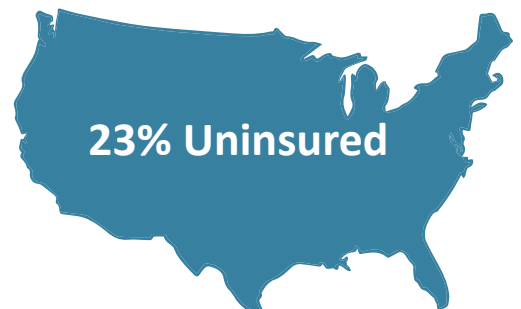
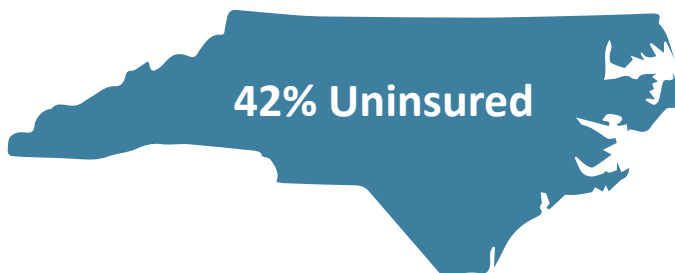
When people with low incomes have health coverage, they:

- are more productive workers
- are less likely to miss rent or mortgage payments
- have fewer unmet medical needs



Offer access to insurance coverage for up to **150,000 people** who need care for mental health or substance use

More NC CHC Patients Are Uninsured Than the National Average for CHCs



NCCHCA STATE PRIORITIES

Priority 2: Increase Provider Loan Repayment

Rural CHCs have trouble recruiting & retaining providers.

Provider loan repayment strengthens recruitment and retention among Safety Net providers.

- Safety net providers are nonprofits and cannot pay high salaries. The debt load of graduating medical residents in 2016 was \$190,000, and that will only increase in subsequent years.
- Safety net providers are often the only primary care provider in a rural area willing to see uninsured patients.
- Once recruited, health care providers bring economic growth to rural communities.

Health Care Providers Bring Economic Growth to Rural Communities

Rural Provider Type	Annual Economic Impact on Rural Community
Physician	\$615,282
Physician Assistant	\$298,238
Nurse Practitioner	\$317,377
Social Worker	\$211,188
Dentist	\$794,077

NC Office of Rural Health, Provider Multiplier Economic Impact Study, 2017. Results may vary by county.

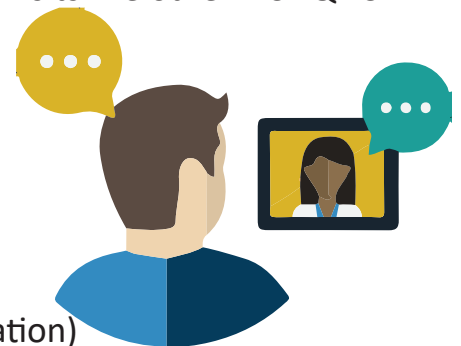
Priority 3: Telehealth

Telehealth has the potential to improve access to service and enhance existing patient-provider relationships.

- Only 14 of the 42 NC FQHCs utilize limited telehealth on a pilot basis because reimbursement isn't available to enable them to provide the service to all patients.
- NC should enable NC FQHCs to bill for live video conferencing visits like other NC FQHC services.

The North Carolina General Assembly should pass legislation to enable FQHCs to bill Medicare/Medicaid for:

- Mobile health visits
- Remote patient monitoring
- Distant site provider services in live video conferencing
- Store and forward (electronic transmission of medical information)



NC COMMUNITY HEALTH CENTERS 2019

Alamance | Piedmont Health Services
Alleghany | AppHealthCare
Anson | Anson Regional Medical Services
Ashe | AppHealthCare
Avery | High Country Community Health
Beaufort | Metropolitan Community Health Services
Bertie | Bertie County Rural Health Association |
 Roanoke Chowan Community Health Center
Bladen | CommWell Health
Brunswick | CommWell Health | Goshen Medical Center
Buncombe | Western NC Community Health Services |
 Blue Ridge Health
Burke | High Country Community Health
Cabarrus | Cabarrus Rowan Community Health Center
Caldwell | West Caldwell Health Council
Caswell | Caswell Family Medical Center | Piedmont Health
 Services
Catawba | Gaston Family Health Services
Chatham | Piedmont Health Services
Cherokee | Appalachian Mountain Community Health Centers
Chowan | Gateway Community Health Centers
Columbus | Goshen Medical Center | Robeson Health Care
 Corporation
Craven | Goshen Medical Center | Craven County
 Community Health Center
Cumberland | Stedman-Wade Health Services |
 Goshen Medical Center
Davidson | Gaston Family Health Services
Duplin | Goshen Medical Center
Durham | Lincoln Community Health Center
Edgecombe | Carolina Family Health Centers | OIC
 Family Medical Center | Rural Health Group
Forsyth | United Health Centers
Franklin | Advance Community Health
Gaston | Gaston Family Health Services
Gates | Gateway CHC
Graham | Appalachian Mountain Community Health Centers
Greene | Greene County Health Care
Guilford | Triad Adult and Pediatric Medicine
Halifax | Rural Health Group
Harnett | First Choice Community Health Center
Haywood | Appalachian Mountain Community Health Centers
 | Blue Ridge Community Health Services
Henderson | Blue Ridge Health
Hertford | Roanoke Chowan Community Health Center
Hoke | South Central CHC
Hyde | Ocracoke Health Center

Iredell | Gaston Family Health Services
Jackson | Appalachian Mountain Community Health
 Centers | Blue Ridge Health
Johnston | CommWell Health
Jones | Goshen Medical Center
Lenoir | Kinston Community Health Center
Lincoln | Gaston Family Health Services
Macon | Appalachian Mountain Health Center
Madison | Hot Springs Health Program
Martin | Metropolitan Community Health Services
McDowell | Appalachian Mountain Community Health Centers
Mecklenburg | C.W. Williams Community Health Center |
 Charlotte Community Health
Mitchell | Mountain Community Health Partnership
Montgomery | Robeson Health Care Corporation
Nash | Carolina Family Health Centers
New Hanover | MedNorth Health Center
Northampton | Rural Health Group
Onslow | Goshen Medical Center
Orange | Piedmont Health Services
Pamlico | Greene County Health Care
Pasquotank | Gateway Community Health Centers
Pender | CommWell Health | Black River Health Services
Person | Person Family Medical Center
Polk | Blue Ridge Health
Pitt | Greene County Health Care
Randolph | MERCE Family Healthcare
Richmond | Anson Regional Medical Services
Robeson | Robeson Health Care Corporation
Rowan | Cabarrus Rowan Community Health Centers
Rutherford | Blue Ridge Community Health Services
Sampson | CommWell Health | Goshen Medical Center
Scotland | Robeson Health Care Corporation
Transylvania | Blue Ridge Health
Union | Anson Regional Medical Services
Vance | Rural Health Group
Wake | Advance Community Health
Warren | Rural Health Group
Washington | Roanoke Chowan | Metropolitan
 Community Health Center
Watauga | High Country Community Health
Wayne | Goshen Medical Center
Wilkes | Wilkes Community Health Center
Wilson | Carolina Family Health Centers
Yancey | Mountain Community Health Partnership

